

THIS SURVEY MEETS STANDARDS AS OUTLINED IN CORPS OF ENGINEERS' HYDROGRAPHIC SURVEY MANUAL EM1110-2-1003, DATED NOVEMBER 30, 2013 FOR NAVIGATION AND DREDGING SUPPORT SURVEYS.

HORIZONTAL REFERENCE - NAD 83, NEW JERSEY STATE PLANE, ZONE 2900, U.S. FOOT.

VERTICAL REFERENCE - MEAN LOWER LOW WATER, WHICH IS 2.47' BELOW N.A.V.D. 88.

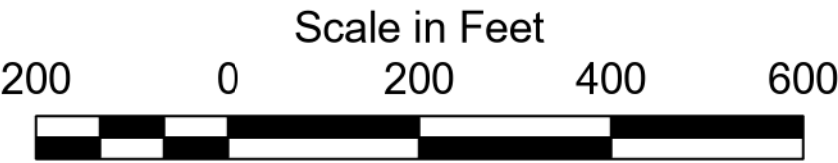
GEOID 18 AND NOAA TIDAL EPOCH: 1983 - 2001 WERE USED. SOUNDINGS ARE EXPRESSED IN FEET AND TENTHS AND REFER TO MEAN LOWER LOW WATER.

THE INFORMATION DEPICTED ON THIS MAP REPRESENT THE RESULTS OF SURVEYS MADE ON THE DATES INDICATED AND CAN ONLY BE CONSIDERED AS INDICATING THE GENERAL CONDITIONS EXISTING AT THAT TIME.

THE POSITIONS OF THE AIDS TO NAVIGATION ARE PROVIDED FOR INFORMATION ONLY, AND SHOULD NOT BE USED FOR NAVIGATION.

THE LIMITS OF THE FEDERAL CHANNEL DEPICT THE MOST CURRENT CHANNEL FRAMEWORK AVAILABLE WHICH CAN ALSO BE DOWNLOADED HERE:
<http://navigation.usace.army.mil/Survey/Framework>

BASE MAPPING LINEWORK OR ORTHOPHOTOGRAPHY HAS BEEN COMPILED FROM A VARIETY OF SOURCES AND DATES AND IS INTENDED TO PORTRAY GENERAL CHARACTERISTICS OF THE SHORELINE AND OTHER FEATURES. TEMPORAL CHANGES MAY HAVE OCCURRED SINCE THIS DATA SET WAS COLLECTED AND SOME PARTS OF THE DATA MAY NO LONGER BE AN ACCURATE REPRESENTATION OF THE SURFACE CONDITIONS.



- Legend**
- Sounding Points 6 - 50
 - Shoalest Sounding per Quarter 5 - 6
 - Channel Framework 4 - 5
 - Centerline 3 - 4
 - 2 - 3
 - 1 - 2
 - 4.36 - 1



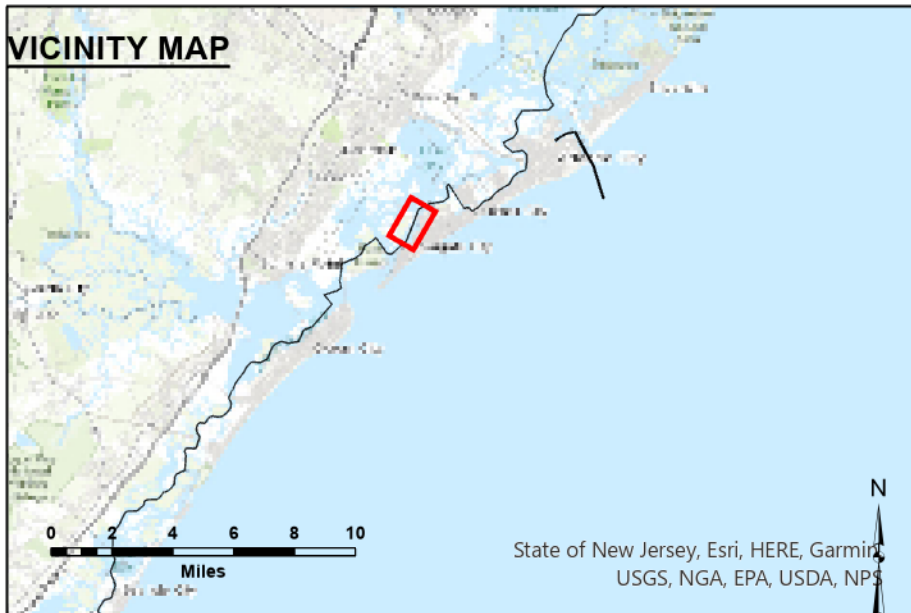
MKR #211 to MKR #222 -- 20 MAY 24
MKR #222 to MKR #231 -- 28 AUG 23
MKR #231 to MKR #245 -- 24 AUG 23

DISCLAIMER
This data is provided for general information only. It is not intended for use in any project or for any purpose other than that for which it was collected. The Corps of Engineers does not warrant the accuracy or completeness of the data provided. The user assumes all responsibility for the use of this data and for any damages or losses resulting from its use.

Surveyed By	Checked By
Philip By	E. MILLER
First Scale	Checked By
Approved	Chief, Survey Section

NEW JERSEY INTRACOASTAL WATERWAY
IW 11 - MKR #211 to MKR #245
EXAMINATION

IW-37



THIS SURVEY MEETS STANDARDS AS OUTLINED IN CORPS OF ENGINEERS' HYDROGRAPHIC SURVEY MANUAL EM1110-2-1003, DATED NOVEMBER 30, 2013 FOR NAVIGATION AND DREDGING SUPPORT SURVEYS.

HORIZONTAL REFERENCE - NAD 83, NEW JERSEY STATE PLANE, ZONE 2900, U.S. FOOT.

VERTICAL REFERENCE - MEAN LOWER LOW WATER, WHICH IS 2.47' BELOW N.A.V.D. 88.

GEOID 18 AND NOAA TIDAL EPOCH: 1983 - 2001 WERE USED. SOUNDINGS ARE EXPRESSED IN FEET AND TENTHS AND REFER TO MEAN LOWER LOW WATER.

THE INFORMATION DEPICTED ON THIS MAP REPRESENT THE RESULTS OF SURVEYS MADE ON THE DATES INDICATED AND CAN ONLY BE CONSIDERED AS INDICATING THE GENERAL CONDITIONS EXISTING AT THAT TIME.

THE POSITIONS OF THE AIDS TO NAVIGATION ARE PROVIDED FOR INFORMATION ONLY, AND SHOULD NOT BE USED FOR NAVIGATION.

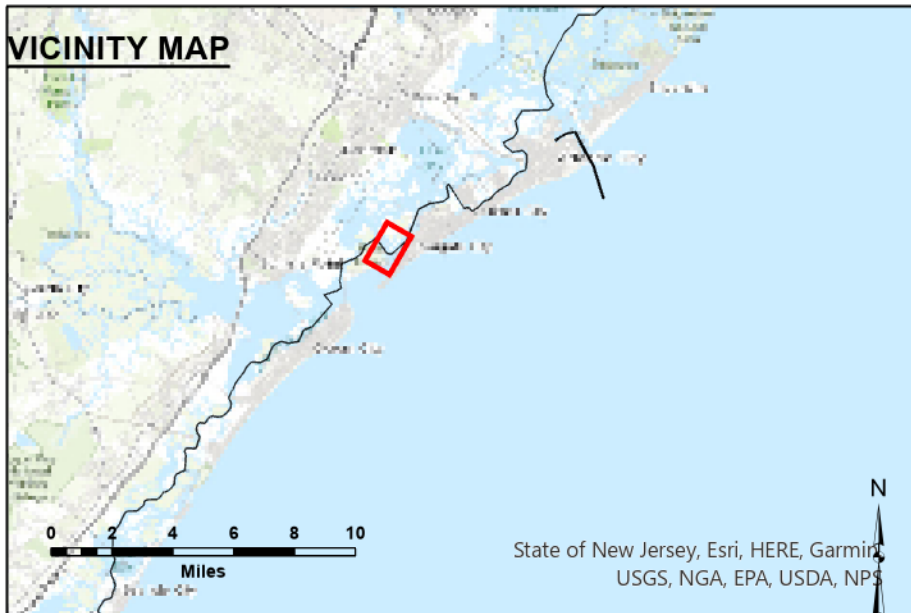
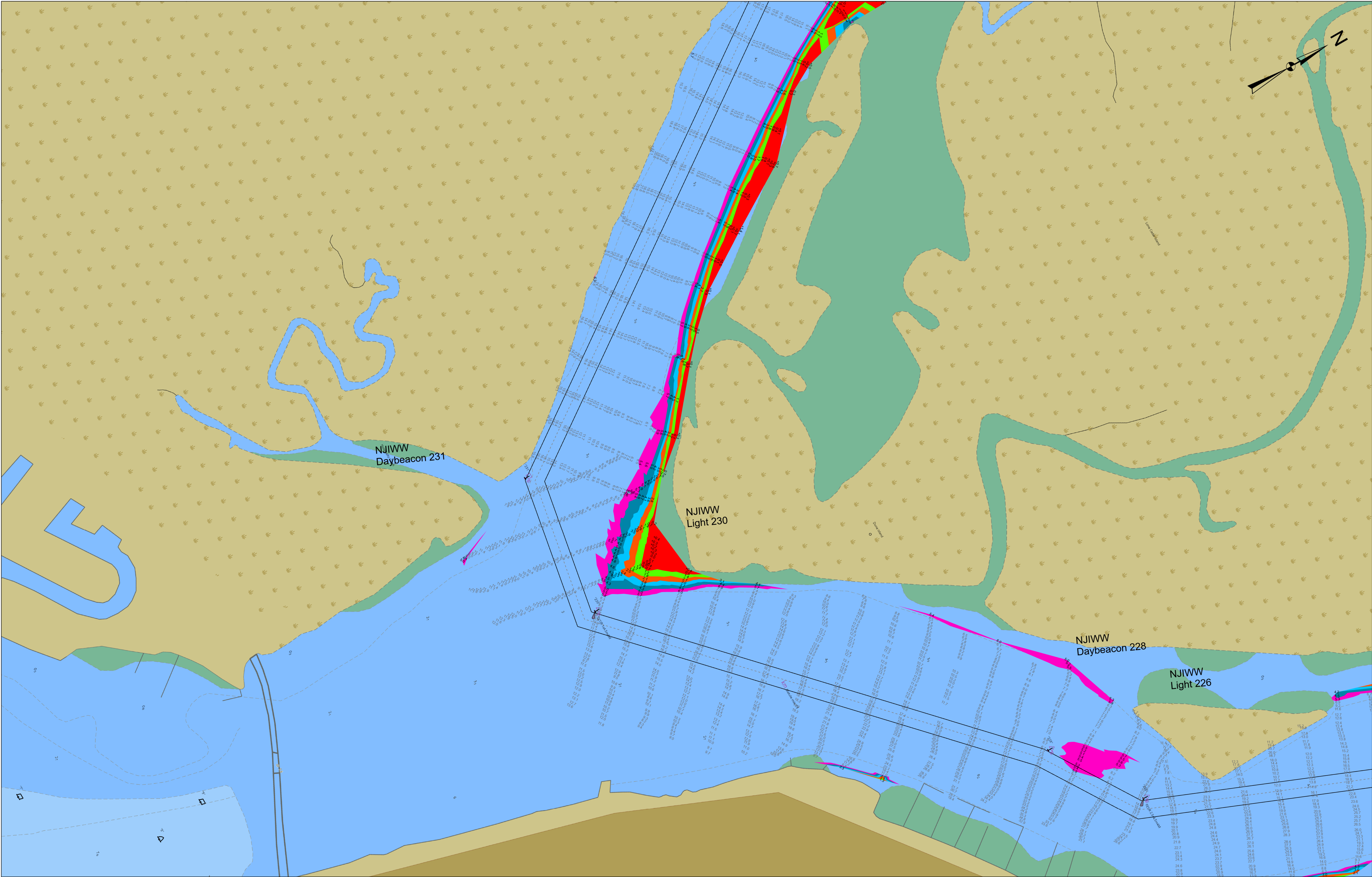
THE LIMITS OF THE FEDERAL CHANNEL DEPICT THE MOST CURRENT CHANNEL FRAMEWORK AVAILABLE WHICH CAN ALSO BE DOWNLOADED HERE:

<http://navigation.usace.army.mil/Survey/Framework>

BASE MAPPING LINEWORK OR ORTHOPHOTOGRAPHY HAS BEEN COMPILED FROM A VARIETY OF SOURCES AND DATES AND IS INTENDED TO PORTRAY GENERAL CHARACTERISTICS OF THE SHORELINE AND OTHER FEATURES. TEMPORAL CHANGES MAY HAVE OCCURRED SINCE THIS DATA SET WAS COLLECTED AND SOME PARTS OF THE DATA MAY NO LONGER BE AN ACCURATE REPRESENTATION OF THE SURFACE CONDITIONS.



- Legend**
- Sounding Points 6 - 50
 - Shoalest Sounding per Quarter 5 - 6
 - Channel Framework 4 - 5
 - Centerline 3 - 4
 - 2 - 3
 - 1 - 2
 - 4.36 - 1



THIS SURVEY MEETS STANDARDS AS OUTLINED IN CORPS OF ENGINEERS' HYDROGRAPHIC SURVEY MANUAL EM1110-2-1003, DATED NOVEMBER 30, 2013 FOR NAVIGATION AND DREDGING SUPPORT SURVEYS.

HORIZONTAL REFERENCE - NAD 83, NEW JERSEY STATE PLANE, ZONE 2900, U.S. FOOT.

VERTICAL REFERENCE - MEAN LOWER LOW WATER, WHICH IS 2.47' BELOW N.A.V.D. 88.

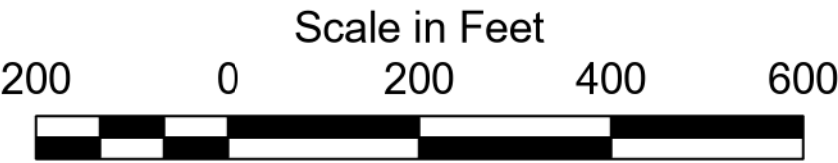
GEOID 18 AND NOAA TIDAL EPOCH: 1983 - 2001 WERE USED. SOUNDINGS ARE EXPRESSED IN FEET AND TENTHS AND REFER TO MEAN LOWER LOW WATER.

THE INFORMATION DEPICTED ON THIS MAP REPRESENT THE RESULTS OF SURVEYS MADE ON THE DATES INDICATED AND CAN ONLY BE CONSIDERED AS INDICATING THE GENERAL CONDITIONS EXISTING AT THAT TIME.

THE POSITIONS OF THE AIDS TO NAVIGATION ARE PROVIDED FOR INFORMATION ONLY, AND SHOULD NOT BE USED FOR NAVIGATION.

THE LIMITS OF THE FEDERAL CHANNEL DEPICT THE MOST CURRENT CHANNEL FRAMEWORK AVAILABLE WHICH CAN ALSO BE DOWNLOADED HERE:
<http://navigation.usace.army.mil/Survey/Framework>

BASE MAPPING LINEWORK OR ORTHOPHOTOGRAPHY HAS BEEN COMPILED FROM A VARIETY OF SOURCES AND DATES AND IS INTENDED TO PORTRAY GENERAL CHARACTERISTICS OF THE SHORELINE AND OTHER FEATURES. TEMPORAL CHANGES MAY HAVE OCCURRED SINCE THIS DATA SET WAS COLLECTED AND SOME PARTS OF THE DATA MAY NO LONGER BE AN ACCURATE REPRESENTATION OF THE SURFACE CONDITIONS.



- Legend**
- Sounding Points 6 - 50
 - Shoalest Sounding per Quarter 5 - 6
 - Channel Framework 4 - 5
 - Centerline 3 - 4
 - 2 - 3
 - 1 - 2
 - 4.36 - 1



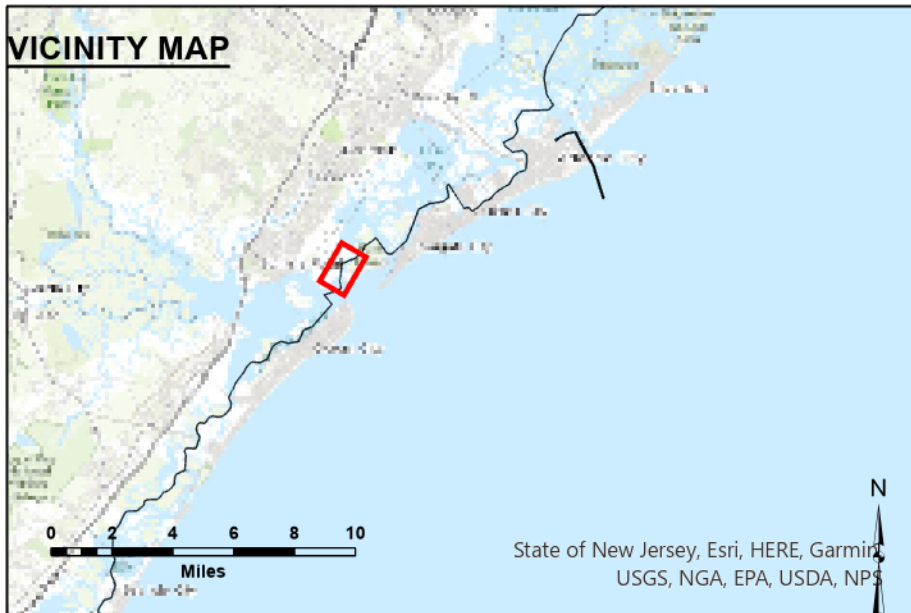
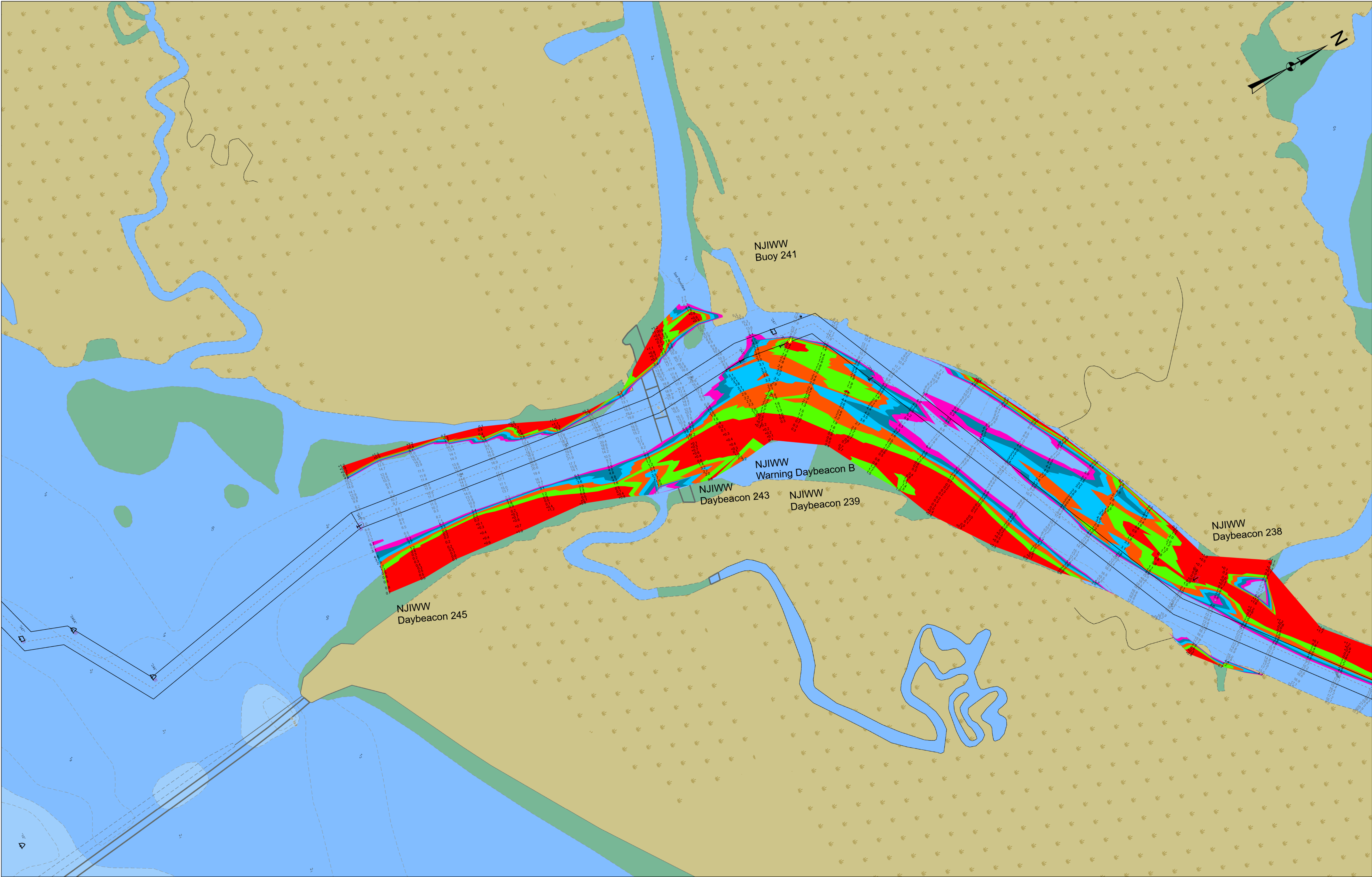
MKR #211 to MKR #222 -- 20 MAY 24
MKR #222 to MKR #231 -- 28 AUG 23
MKR #231 to MKR #245 -- 24 AUG 23

DISCLAIMER
This data is provided for general information only. It is not intended for use in any project or for any purpose other than that for which it was collected. The Corps of Engineers does not warrant the accuracy or completeness of the data provided. The user assumes all responsibility for the use of the data and for any damages or losses resulting from its use.

Surveyed By	Checked By
Philip By	E. J. J. J.
First Scale	Checked By
Approved	Chief, Survey Section

NEW JERSEY INTRACOASTAL WATERWAY
IW 11 - MKR #211 to MKR #245
EXAMINATION

IW-37



THIS SURVEY MEETS STANDARDS AS OUTLINED IN CORPS OF ENGINEERS' HYDROGRAPHIC SURVEY MANUAL EM1110-2-1003, DATED NOVEMBER 30, 2013 FOR NAVIGATION AND DREDGING SUPPORT SURVEYS.

HORIZONTAL REFERENCE - NAD 83, NEW JERSEY STATE PLANE, ZONE 2900, U.S. FOOT.

VERTICAL REFERENCE - MEAN LOWER LOW WATER, WHICH IS 2.47' BELOW N.A.V.D. 88.

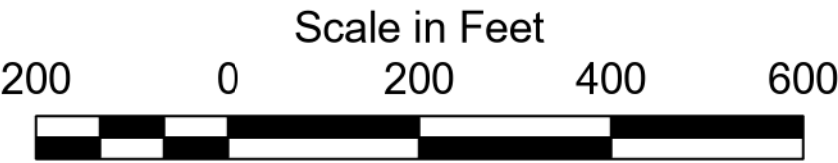
GEOID 18 AND NOAA TIDAL EPOCH: 1983 - 2001 WERE USED. SOUNDINGS ARE EXPRESSED IN FEET AND TENTHS AND REFER TO MEAN LOWER LOW WATER.

THE INFORMATION DEPICTED ON THIS MAP REPRESENT THE RESULTS OF SURVEYS MADE ON THE DATES INDICATED AND CAN ONLY BE CONSIDERED AS INDICATING THE GENERAL CONDITIONS EXISTING AT THAT TIME.

THE POSITIONS OF THE AIDS TO NAVIGATION ARE PROVIDED FOR INFORMATION ONLY, AND SHOULD NOT BE USED FOR NAVIGATION.

THE LIMITS OF THE FEDERAL CHANNEL DEPICT THE MOST CURRENT CHANNEL FRAMEWORK AVAILABLE WHICH CAN ALSO BE DOWNLOADED HERE:
<http://navigation.usace.army.mil/Survey/Framework>

BASE MAPPING LINEWORK OR ORTHOPHOTOGRAPHY HAS BEEN COMPILED FROM A VARIETY OF SOURCES AND DATES AND IS INTENDED TO PORTRAY GENERAL CHARACTERISTICS OF THE SHORELINE AND OTHER FEATURES. TEMPORAL CHANGES MAY HAVE OCCURRED SINCE THIS DATA SET WAS COLLECTED AND SOME PARTS OF THE DATA MAY NO LONGER BE AN ACCURATE REPRESENTATION OF THE SURFACE CONDITIONS.



- Legend**
- Sounding Points 6 - 50
 - Shoalest Sounding per Quarter 5 - 6
 - Channel Framework 4 - 5
 - Centerline 3 - 4
 - 2 - 3
 - 1 - 2
 - 4.36 - 1

DISCLAIMER
This data is provided for general information only. It is not intended for use in any other manner. The data is not intended to be used in any way that would require the user to assume any liability for the use of the data. The data is provided as is, without any warranty, express or implied. The user assumes all liability for the use of the data. The data is not intended to be used in any way that would require the user to assume any liability for the use of the data. The data is provided as is, without any warranty, express or implied. The user assumes all liability for the use of the data.

Surveyed By	Checked By
PHILADELPHIA DISTRICT	E. J. JORDAN
Drawn By	Checked By
PHILADELPHIA DISTRICT	E. J. JORDAN
Scale	Checked By
PHILADELPHIA DISTRICT	E. J. JORDAN
Approved	Checked By
PHILADELPHIA DISTRICT	E. J. JORDAN